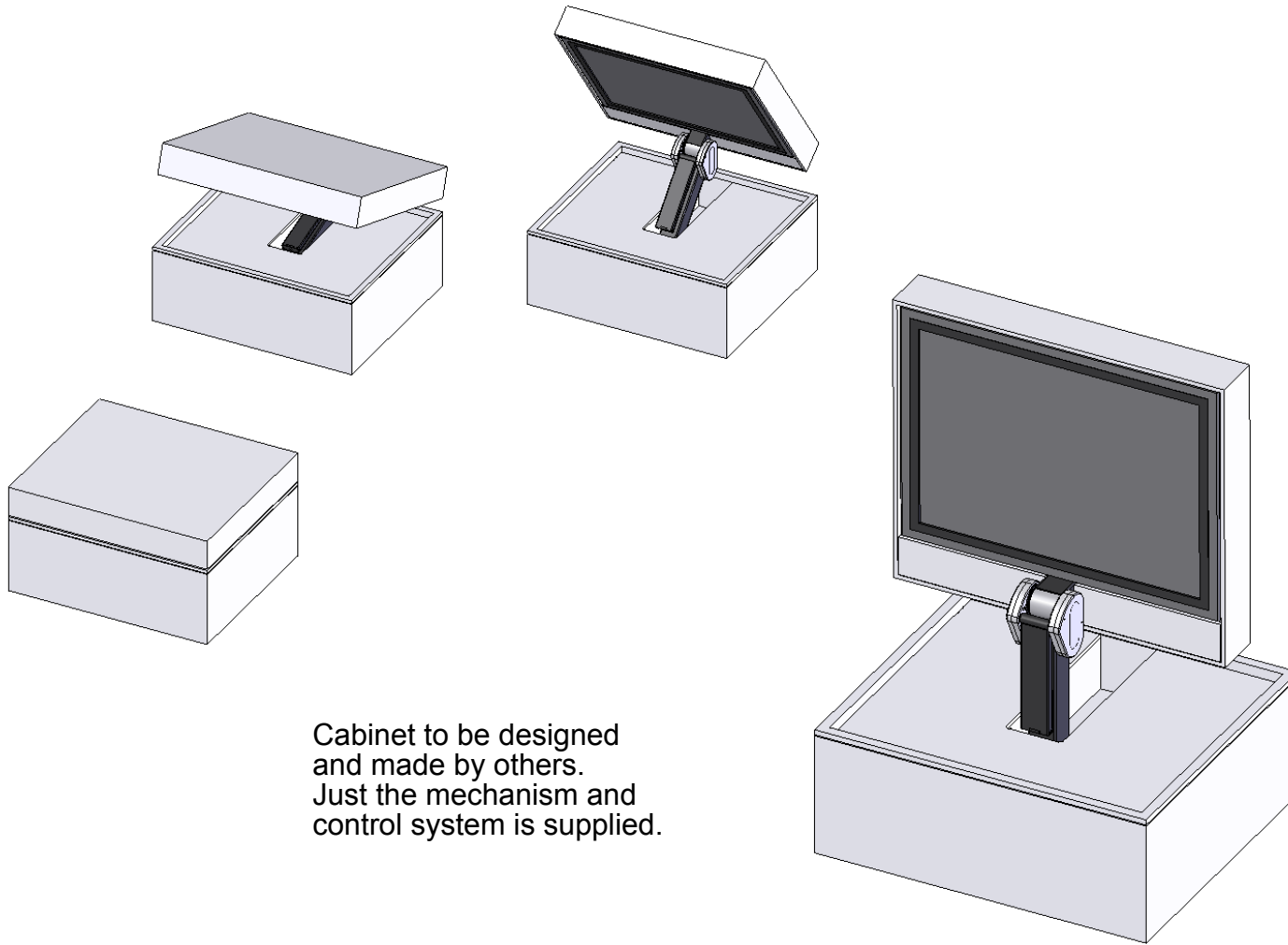


LA Lifting Arm Technical Sheet

Sheet 1 of 9
ISSUE: 001
www.futureautomation.co.uk



Cabinet to be designed
and made by others.
Just the mechanism and
control system is supplied.

WARNING

It is the responsibility of
the installer to warn all
potential end users of
the dangers of interfering
with mechanisms during
operation

IMPORTANT

Mechanisms which lift
or move weights need
to be checked on a
yearly basis for any
damage which may
result in an accident

FUNCTION

The LA mechanism hinges
a flat screen television up
from a box into a viewable
position.

SUITABILITY

This version of the
mechanism is intended
for 26" to 43" screens.

A swivelling version is
also available that
rotates once in the
up position. (LAS)

SPECIFYING

Details of the maximum
screen sizes are shown.

Plasmas or LCD screens
with standard bolt fixings
on the back can be fitted.
See details.

CONTROL

Supplied with basic infrared
remote. Can be learnt
by many learning remotes.

Also has contact closure and
RS232 so can be operated by
switches, Crestron/AMX or
Lutron systems.



FUTUREAUTOMATION



LA Design Highlights

The Lifting arm uses a near silent DC motor to lift and lower the screen through 90 degrees.

An excellent concealment solution for large rooms or for the end of beds. A 500mm high box can reveal the viewable part of the screen to a height of nearly 800mm.

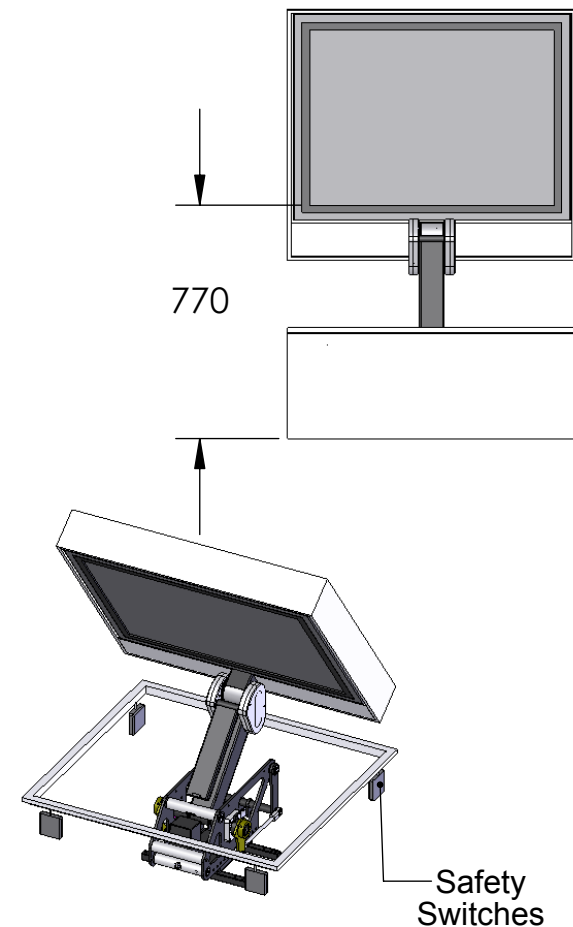
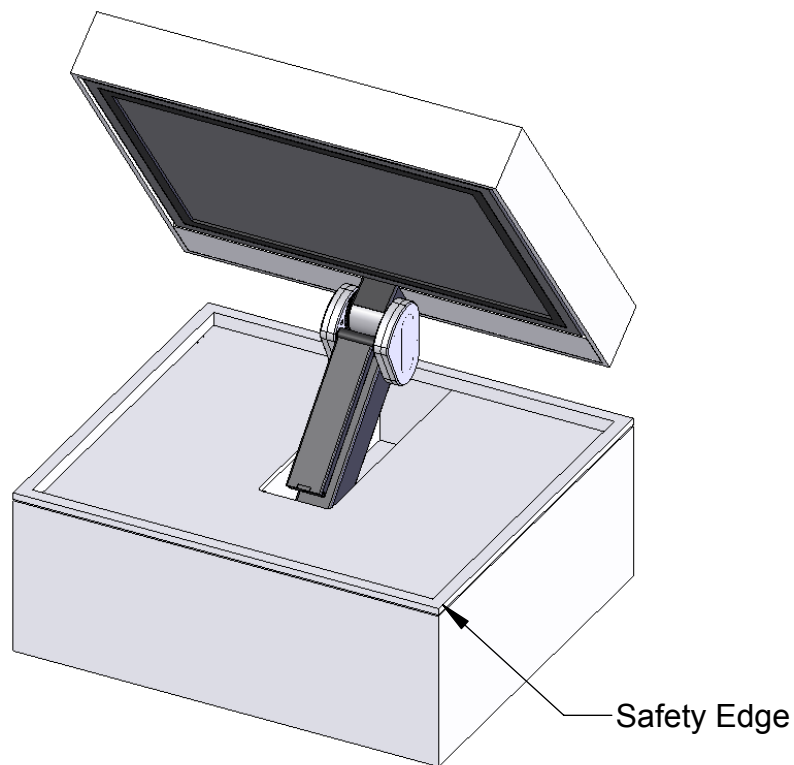
Infrared control allows the user to learn favourite positions to the left and right hand sides.

RS232 and contact closure included as standard.

All signal cables for the screen are concealed within the lifting arm.

Ideal for building into existing chests or boxes.

Swivelling version available that rotates when in the up position.



These four switches are supplied to fit on the inside face of the box. If the safety edge is pushed then the motor stops lowering the screen.

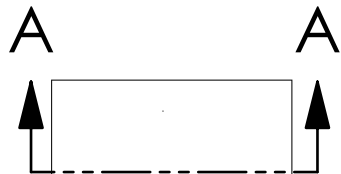


LA Lifting Arm Technical Sheet

Sheet 3 of 9
ISSUE: 001
www.futureautomation.co.uk



View On Top of Closed Box

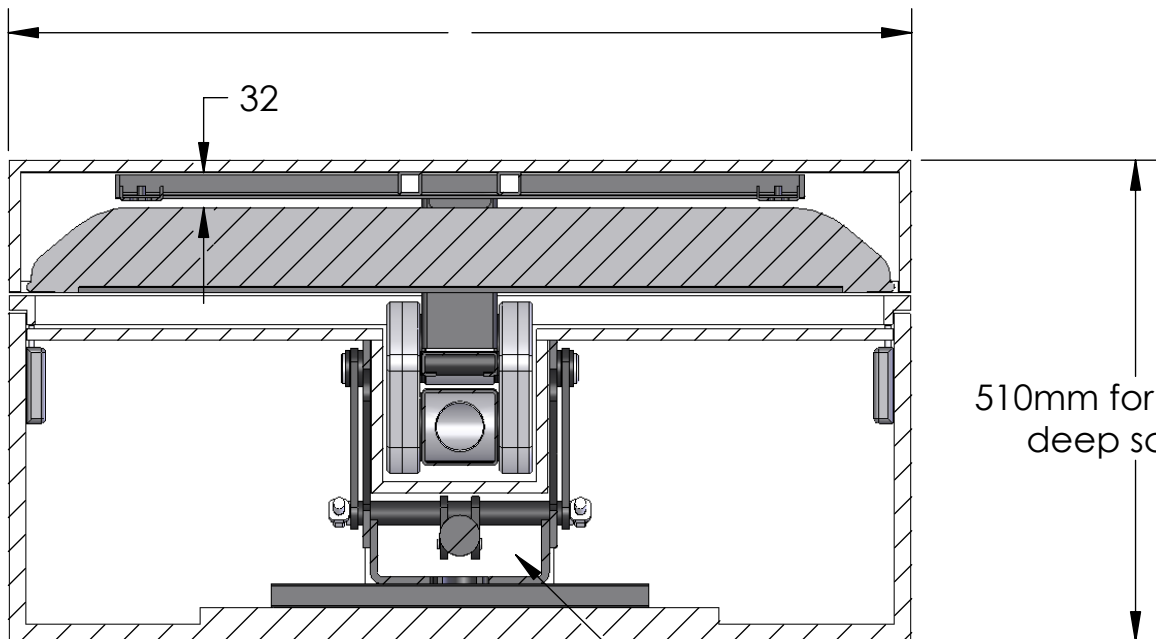


Viewing Side

Width of Lid will be Screen Width
+ 5mm clearance on the left and right (10mm)
+ 24mm for thickness of sides

Lid Height
will be screen
thickness + 32mm
for mount + 12mm
for lid thickness

369 +
Lid Height



SECTION A-A
SCALE 1 : 8

This hatch/ opening at the back
of the box will allow access to the
control box and a mechanical
release incase of electrical failure.

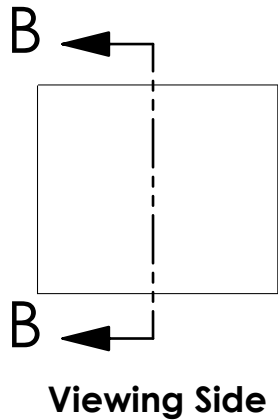
A control box 220mm x 50mm x 140mm
will need to be stored inside the box.



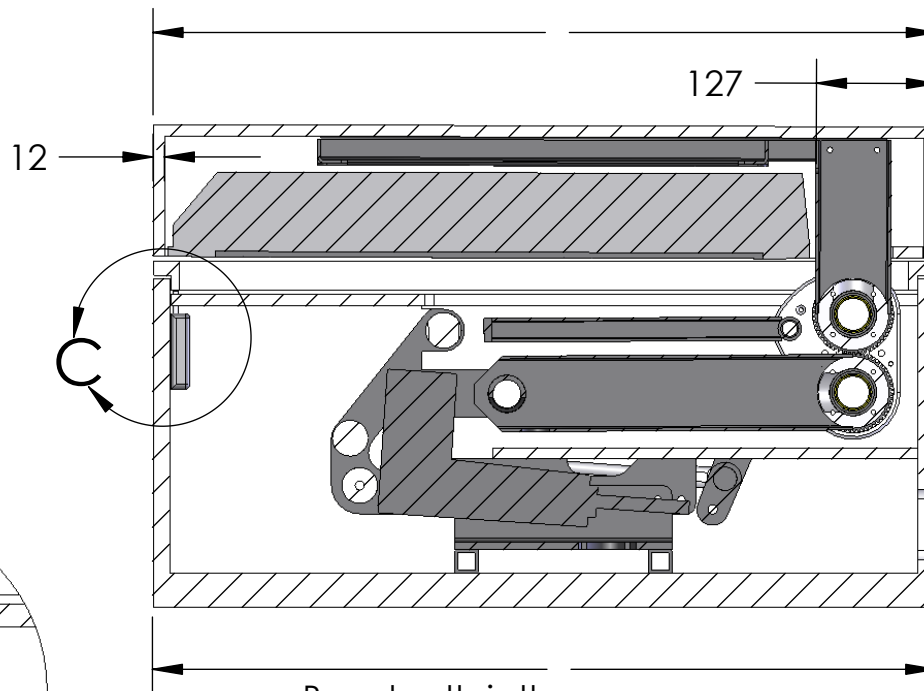
FUTUREAUTOMATION



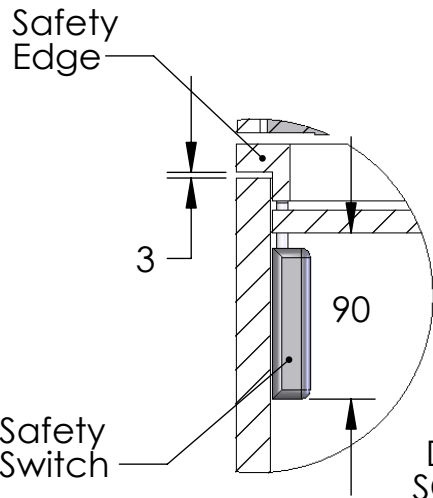
View On Top of Closed Box



Lid Depth will be Screen Height
+ 127mm below screen
+ 12mm lid thickness
+ 5mm clearance



Box depth is the same as the lid depth.



DETAIL C
SCALE 1 : 4

SECTION B-B
SCALE 1 : 8

Important Screen Details

Maximum Screen Height is 700mm

Minimum Screen Height is 530mm

Minimum Screen Width is 730mm

Maximum Screen and lid Weight is 45Kg

Lower height screens can be accommodated by simply adding a trim piece under the screen. You can then use a screen height of 530mm + in these calculations.

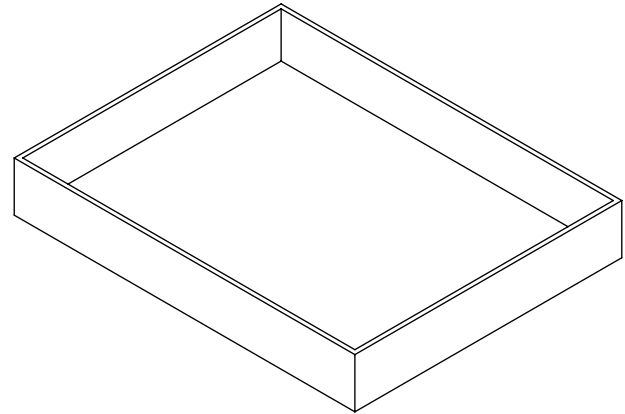
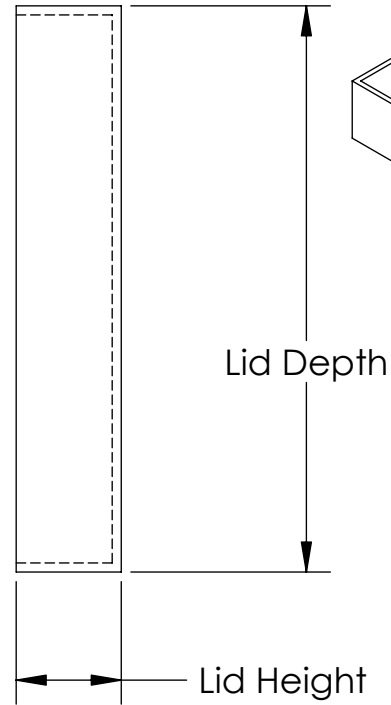
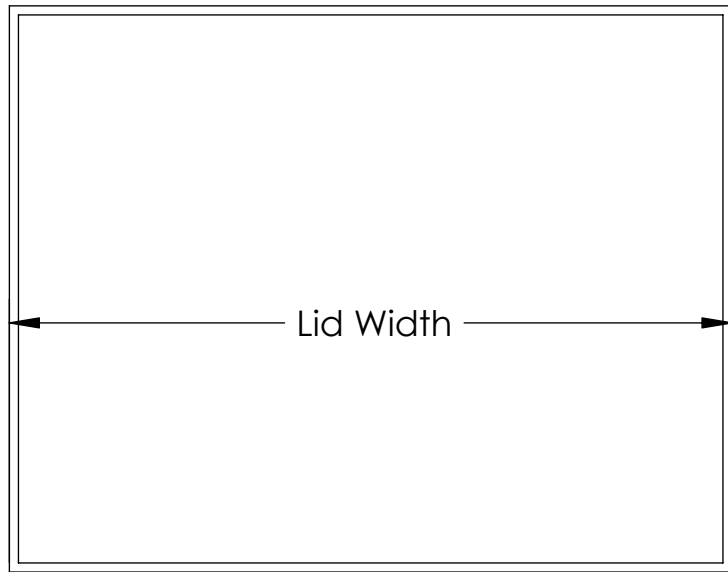
The 5mm clearance around the screen is the only ventilation allowed for. Extra vents may be needed in the top of the Lid.

The cabinet parts that follow are a basic design that just show a simple solution. Cabinets can be made wider or different shapes.

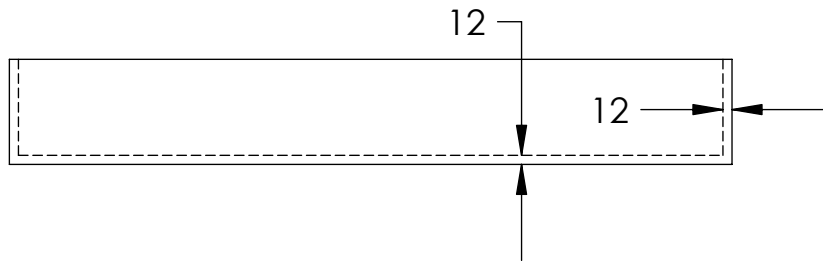




Lid Details

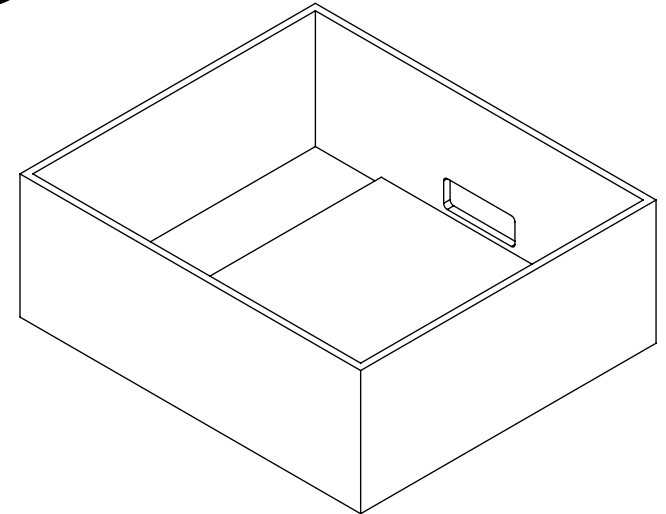
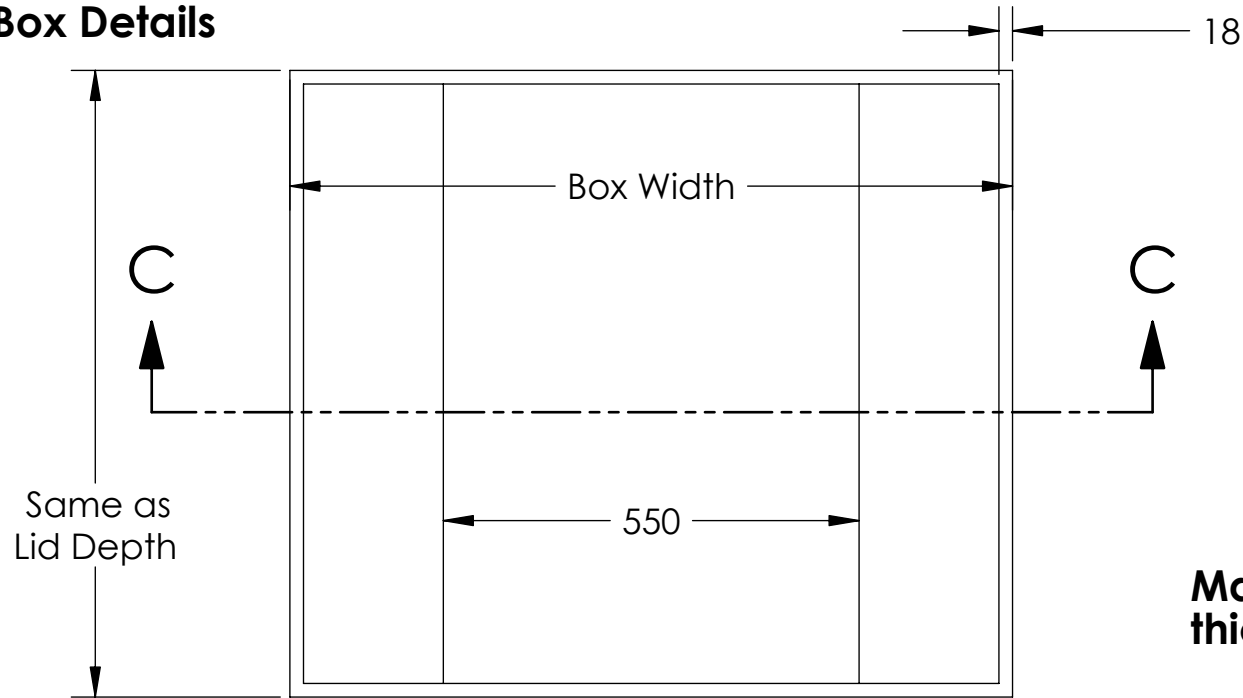


**Made from a lightweight
timber of 12mm thickness.**

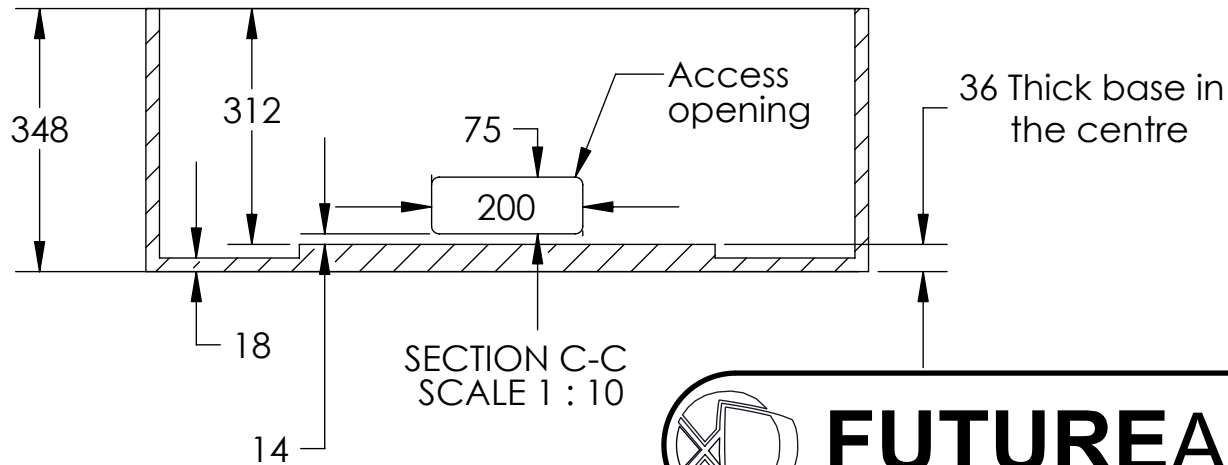




Box Details



Made from an 18mm
thick timber



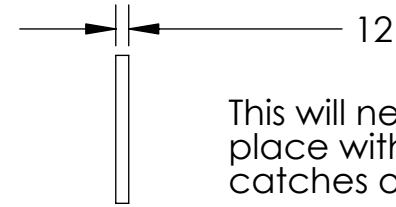
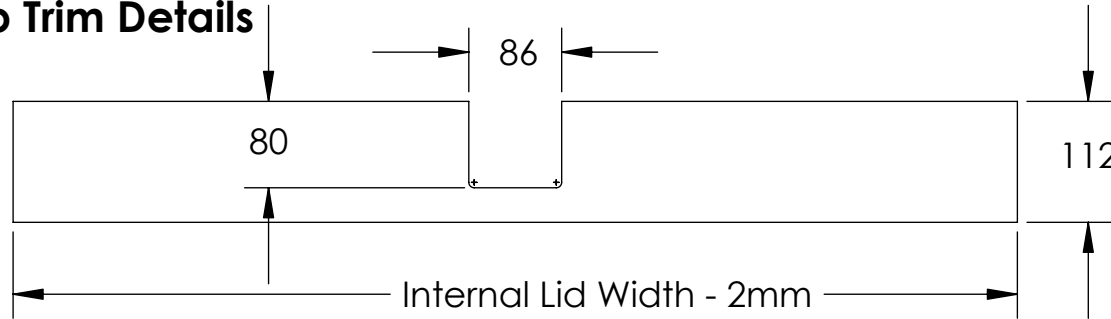
LA Lifting Arm Technical Sheet

Sheet 7 of 9
ISSUE: 001
www.futureautomation.co.uk



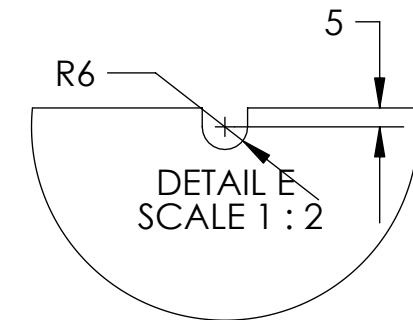
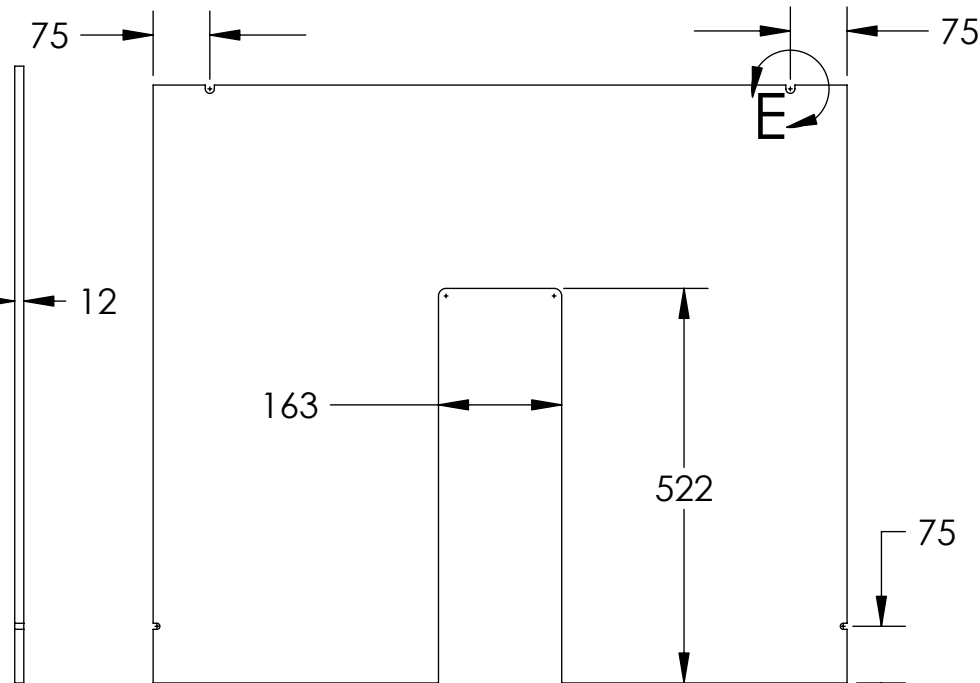
This will need to be 2mm smaller than the inside of the lid on width.

Top Trim Details



This will need holding in place with magnetic catches or similar.

Top Panel Details



These four notches are required for the safety switches.

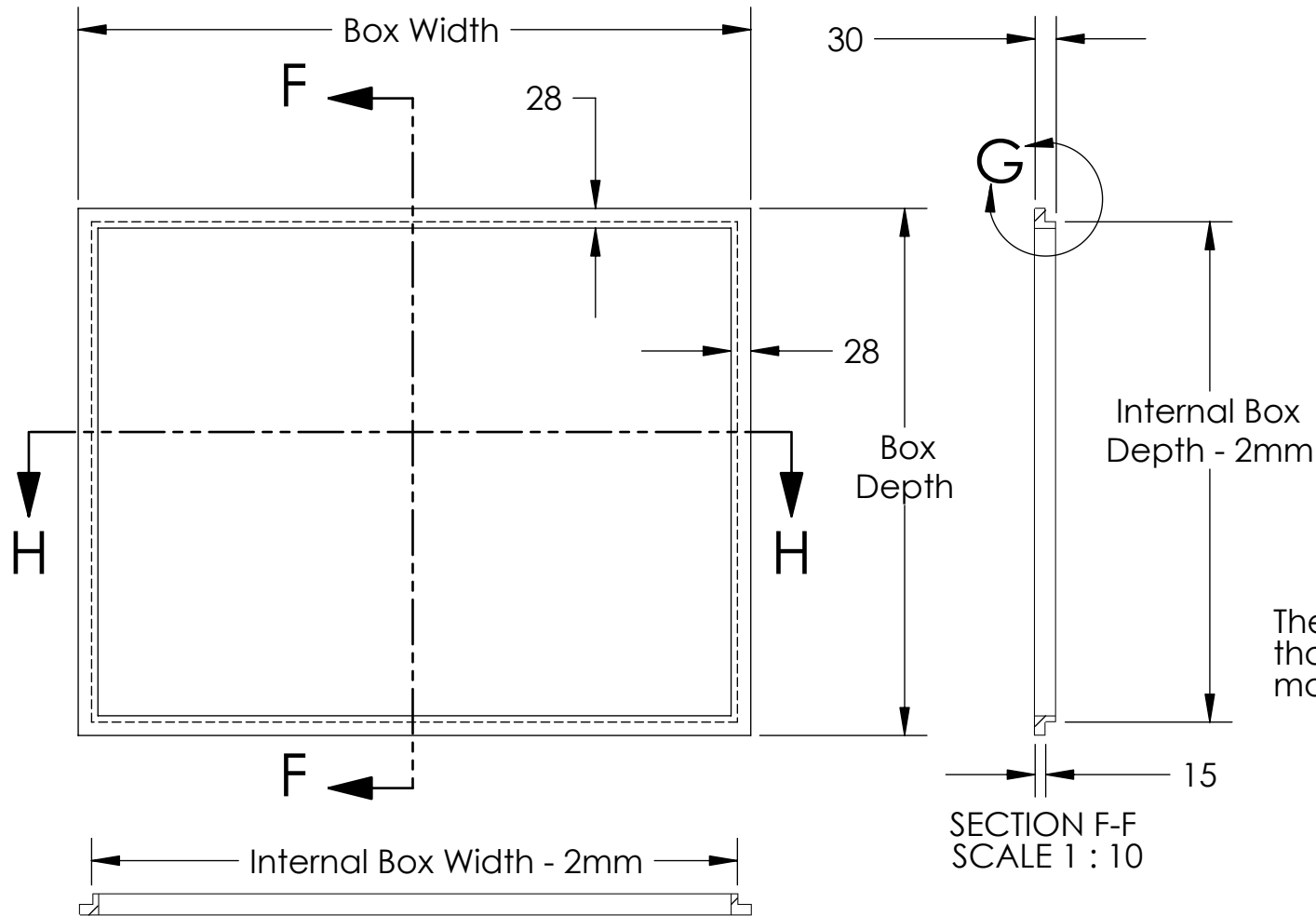
This needs to be 2mm smaller than the inside of the box.



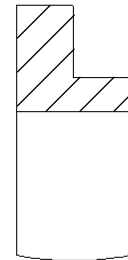
FUTUREAUTOMATION



Safety Edge Details



DETAIL G
SCALE 1 : 2



The safety edge is 2mm smaller than the inside of the box to make sure it can not jam.

SECTION F-F
SCALE 1 : 10

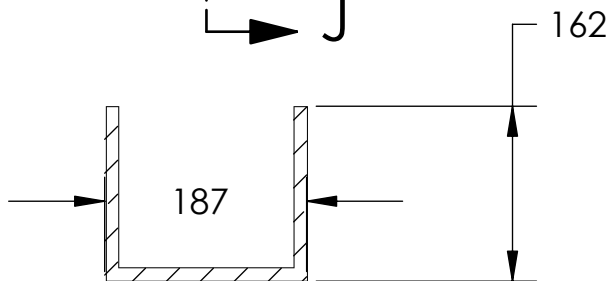
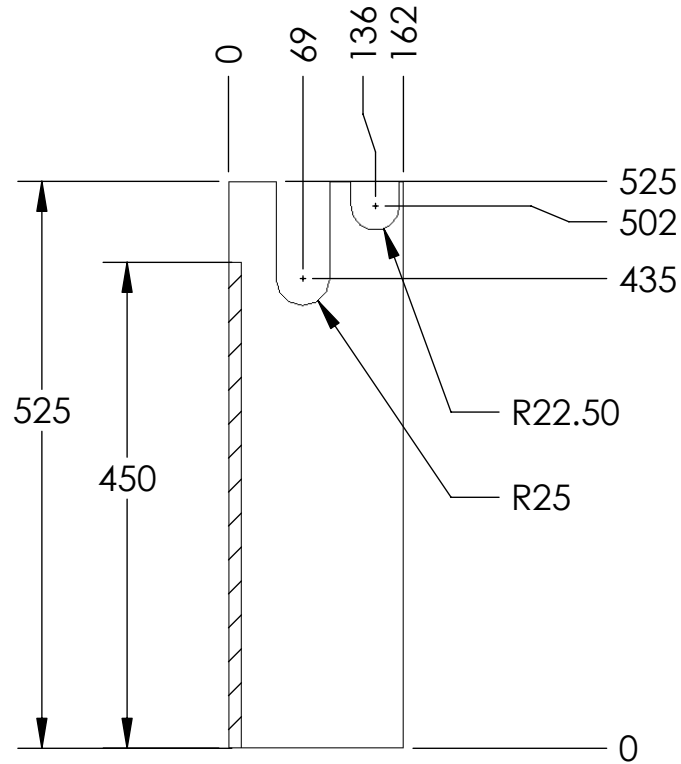
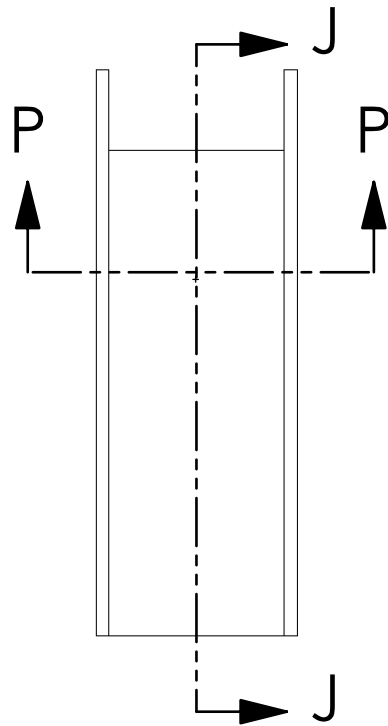
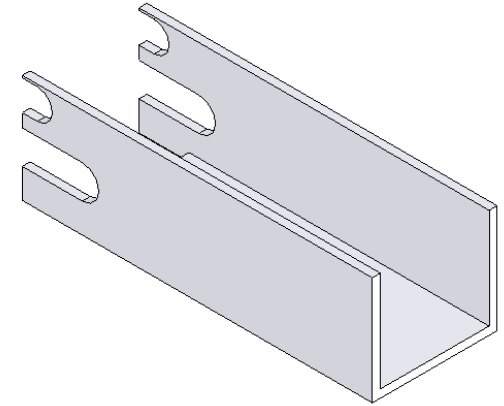
SECTION H-H
SCALE 1 : 10





Insert Details

To be made from a 12mm Timber



SECTION P-P
SCALE 1 : 7

SECTION J-J
SCALE 1 : 7

